

HOUSES[®] **STYLE**

kitchens + bathrooms

ISSUE 03 **\$9.95**

BE INSPIRED
BY AUSTRALIA'S LEADING
ARCHITECTS AND DESIGNERS

**148 pages of
original ideas**

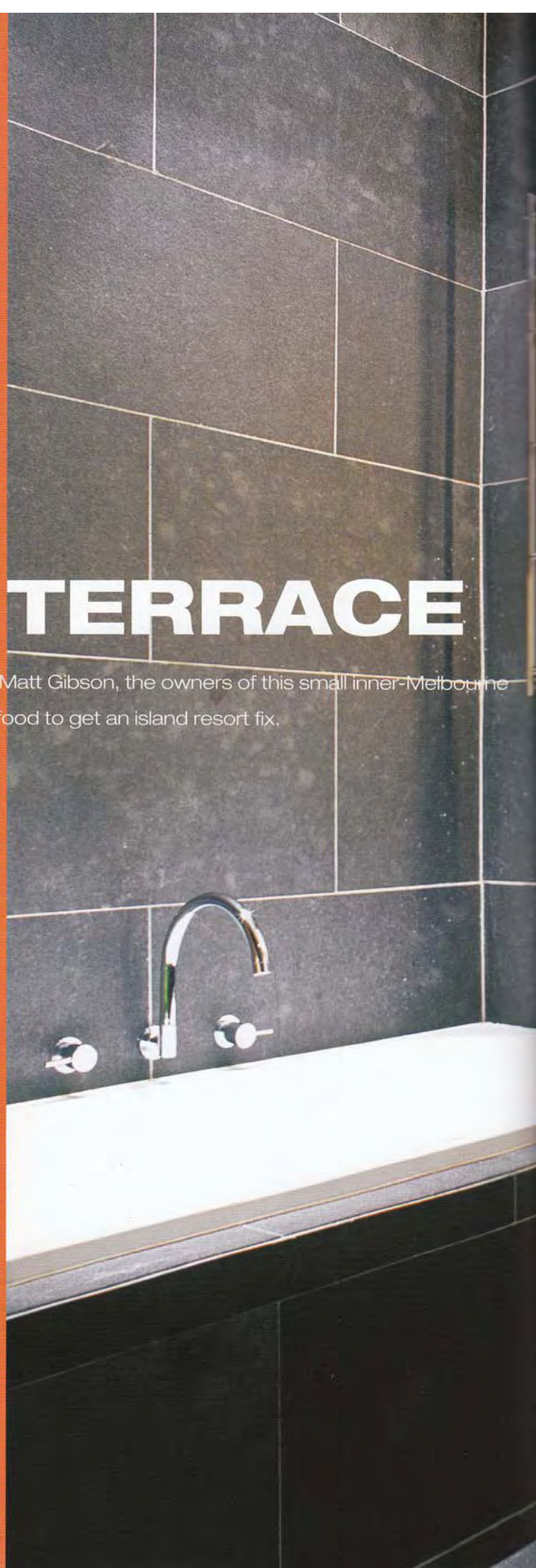
PLANS INCLUDED



SHOWCASE: THE BEST NEW BASINS, BATHS, TAPS, APPLIANCES, SURFACES AND FITTINGS

TROPICAL TERRACE

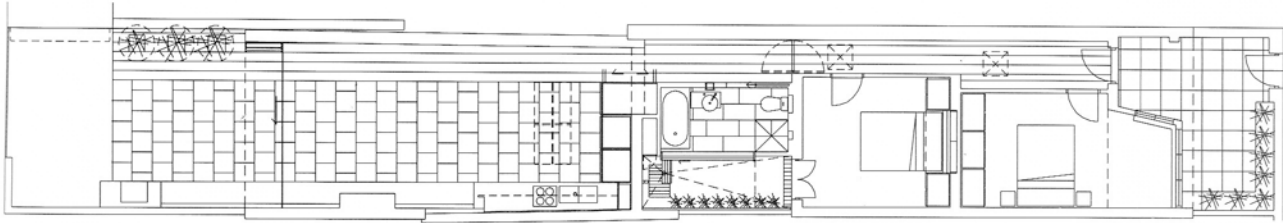
Thanks to a space-maximizing renovation by designer Matt Gibson, the owners of this small inner-Melbourne home no longer need brave airport queues and airline food to get an island resort fix.





PREVIOUS PAGES: Mirrored surfaces in the bathroom and outdoor shower area make the space feel much larger than it really is. THIS PAGE: The outdoor shower area is particularly dramatic at night, when uplighting highlights the granite wall tiles' rugged profiles.





Floor plan



Bathroom elevations

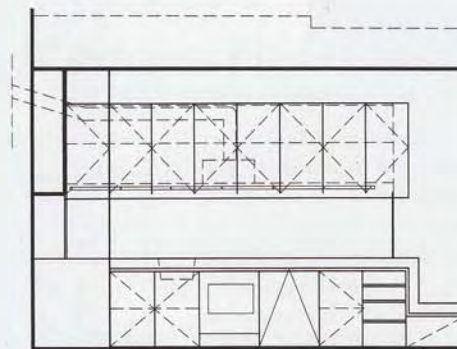
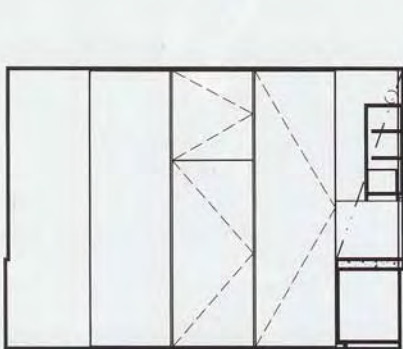


EVER FANCIED an open-air shower amongst the foliage, nothing but the stars above as the steam rises into the night sky? You might think such an experience could only be found in a secluded island resort, but Matt Gibson A+D has created just that in an inner-Melbourne terrace. This house is not just a luxurious, groovy, masculine two-bed residence; it is a lesson in extracting maximum impact from meagre dimensions.

Nowhere is the sleight of hand more apparent than in the bathroom. This room is smoke and mirrors without the smoke. Accessed via the main hall with a separate entrance from the adjoining bedroom, on first inspection the bathroom seems quite large. It's only when the visitor realizes that the movement on the other side of the room is, in fact, themselves that it becomes apparent that a large section of the walls and joinery is mirrored. To complete this happy deception, what at first appears to be simply a small outdoor courtyard turns out to be the open-air shower as well. Warm lighting and dark, large-format wall and floor tiles make this a particularly impressive space at night, one that Matt calls "a rather delicious, sultry retreat". The mood is unmistakably

Asian. Even the showerhead was discovered by the architect on a Thailand holiday. The kitchen is also a space-saver in this house, but in a different way. It has been incorporated into the rear volume of the house, with integrated appliances and a distinct horizontal quality that is reiterated throughout the project. The kitchen benchtops have been articulated to create an extended banquette, which continues into the backyard and finishes at an inbuilt BBQ station. "The kitchen is not designed as a kitchen in isolation but as an integrated living zone within the house," Matt explains. "A restricted range of sophisticated yet timeless materials keep the kitchen uncluttered." This is true of the entire house and the overall effect is one of understated sophistication.

There is significant architectural daring employed throughout this house, and the architect's ability to create a great deal from not much is best exemplified in the kitchen and bathroom. There is a temptation to roll out a "TARDIS-like" reference to Matt Gibson's ability to distort space visually, but that would be doing a disservice to his ability to finish and detail with an eye to opulence. **CM**



Kitchen elevations





DESIGNER

Matt Gibson A+D
7 Peel Street
Collingwood Vic 3066
T: (03) 9419 6677
F: (03) 9419 6644
E: studio@mattgibson.com.au
W: www.mattgibson.com.au

PRACTICE PROFILE

Small practice engaging in high-end residential, hospitality and retail.

PROJECT TEAM

Matt Gibson, Annabel Talbot

BUILDER

O'Neill and Vogel

JOINER

Associated Designcraft

CONSULTANTS

Engineer Don Moore Associates
Lighting Famco, Masson for Light

TIME SCHEDULE

Design, documentation 1 year
Construction 6 months

PROJECT COST

Total project \$200,000
Kitchen \$35,000
Bathrooms \$25,000

PHOTOGRAPHY

Shannon McGrath
John Wheatley (page 38)

OPPOSITE PAGE: The kitchen uses a simple yet sophisticated range of materials, including marble, poured concrete and dark timber veneer. **THIS PAGE:** A large skylight over the kitchen and meals area continues the bathroom's "open air" theme.





PRODUCTS KITCHEN

Internal walls and ceiling

Plasterboard in Dulux 'Antique White USA' **Flooring** Concrete 'Limestone' pavers 500 mm x 500 mm **Joinery** Cladding in 'Ebony Rosso' and vinyl wrap fronts in 'Antique White' from Tesrol; poured concrete benchtop in 'Limestone' with natural wax finish; marble splashback **Lighting** Downlights from Masson for Light; Palmet striplights from Famco **Sinks and tapware** Abey quadrato FS 760 undermount sink; Scope gooseneck mixer from Reece **Appliances** Smeg SA360W/1 stainless steel oven, SAR34AX1 stovetop, P52/2 rangehood and ST663 dishwasher; Fisher & Paykel Tasman series refrigerator **Windows** Frameless roof glazing **Furniture** 'Timber Series' dining table and chairs designed by the architect

PRODUCTS BATHROOM

Internal walls and ceiling

Dulux 'Namadji' gloss; Buffalo 100 mm x 100 mm granite cobbles from Eco Concepts; black limestone tiles; silvered glass mirror on backing board with anodized aluminium edging **Flooring** Black limestone tiles from City Tiler **Joinery** Custom fixed freestanding solid-cedar vanity unit; recessed melamine unit with stainless steel mirror front **Lighting** Downlights from Masson for Light; linear striplight from Famco **Tapware and fittings** Scope bath and basin tapware from Reece; Lineabeta Baketo towel ladder **Sanitaryware** Caroma Milano bath and Fowler Newport toilet from Reece; Carrara marble overmount vessel from Apex Stone **Other** Frameless toughened glass showerscreen

LEFT: The open plan space at the rear of the house connects the kitchen and living area with the outdoor courtyard. The concrete kitchen benchtop flows along one side of the space, stepping down to form a bench seat and then stepping back up to provide an outdoor cooking area with integrated barbecue.